

MiTek®

COMMERCIAL SOLUTIONS

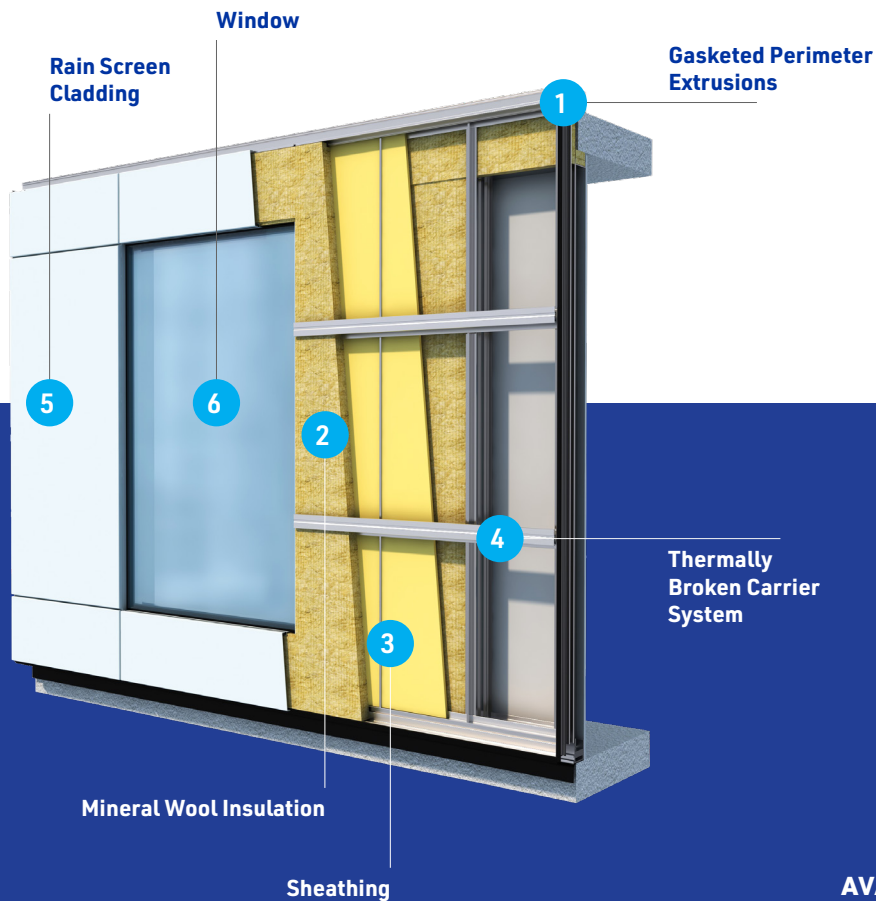
ONEWALL®



FAÇADE
REIMAGINED

It's time for a prefabricated enclosure solution designed with the aesthetic architects strive for, the value owners demand, and the timeline builders need.

How It Works



AVAILABLE SPECIFICATIONS

mii.com/onewall

AN INNOVATIVE PREFABRICATED WALL SOLUTION

ONEWALL® delivers the most complete prefabricated exterior wall panels on the market. Each fully engineered wall unit is crafted with Benson® Curtain Wall design principles featuring stack-joint construction, dry-gasket joints, preinstalled windows, and integrated drywall attachments – no extra sealing or framing required.

Find savings in labor, material, and overhead by harnessing the performance of patent-pending technology and the unmatched simplicity of ONEWALL®.

ONE MANUFACTURER.

ONE INSTALLER.

ONE WARRANTY.

Why ONEWALL®

Fabricating in a controlled environment brings quality, consistency, and efficiency to each project and ensures the design gives contractors pressure equalized rain screen that can be installed with a simple crane hoist.

BENEFITS

- Performance tested for faster enclosure to drive schedule compression
- Premanufactured, consistent quality
- Thermally broken carrier system ensures exceptional energy efficiency
- Pressure-equalized compartments keep water and moisture where they belong
- Arrives onsite ready for installation, craned into position right off the truck
- No scaffolding or mast climbers required
- No extra sealing or framing in the field is required
- Install can take place in almost any weather, mitigating delays
- Reduced field personnel and minimized material storage and waste onsite
- Lighter weight per square foot allows for reduced structural weights
- Meets or exceeds air, water, fire, and structural standards and fire tested to our design
- Single point of contact for entire building façade, including warranty
- Close floors in quicker
- Preinstalled windows

OPTIONS

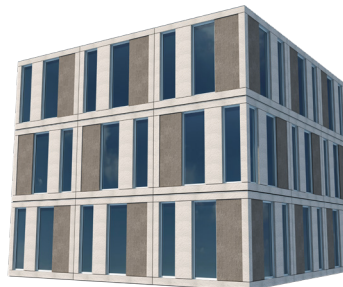
- Accommodates steel, concrete, or mass timber construction
- Multiple finishes, colors, textures, and custom panel designs available
- Virtually limitless window configurations
- Multiple designs for wind and seismic applications
- Mounts on top of or on the face of the slab with multiple attachment methods
- Casement and awning options

Finishes

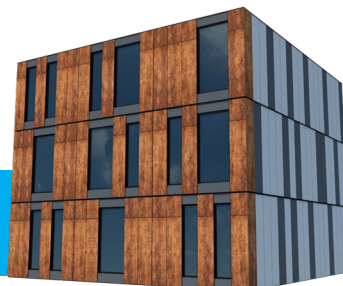
BRICK



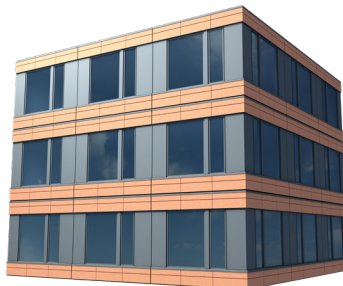
GFRC



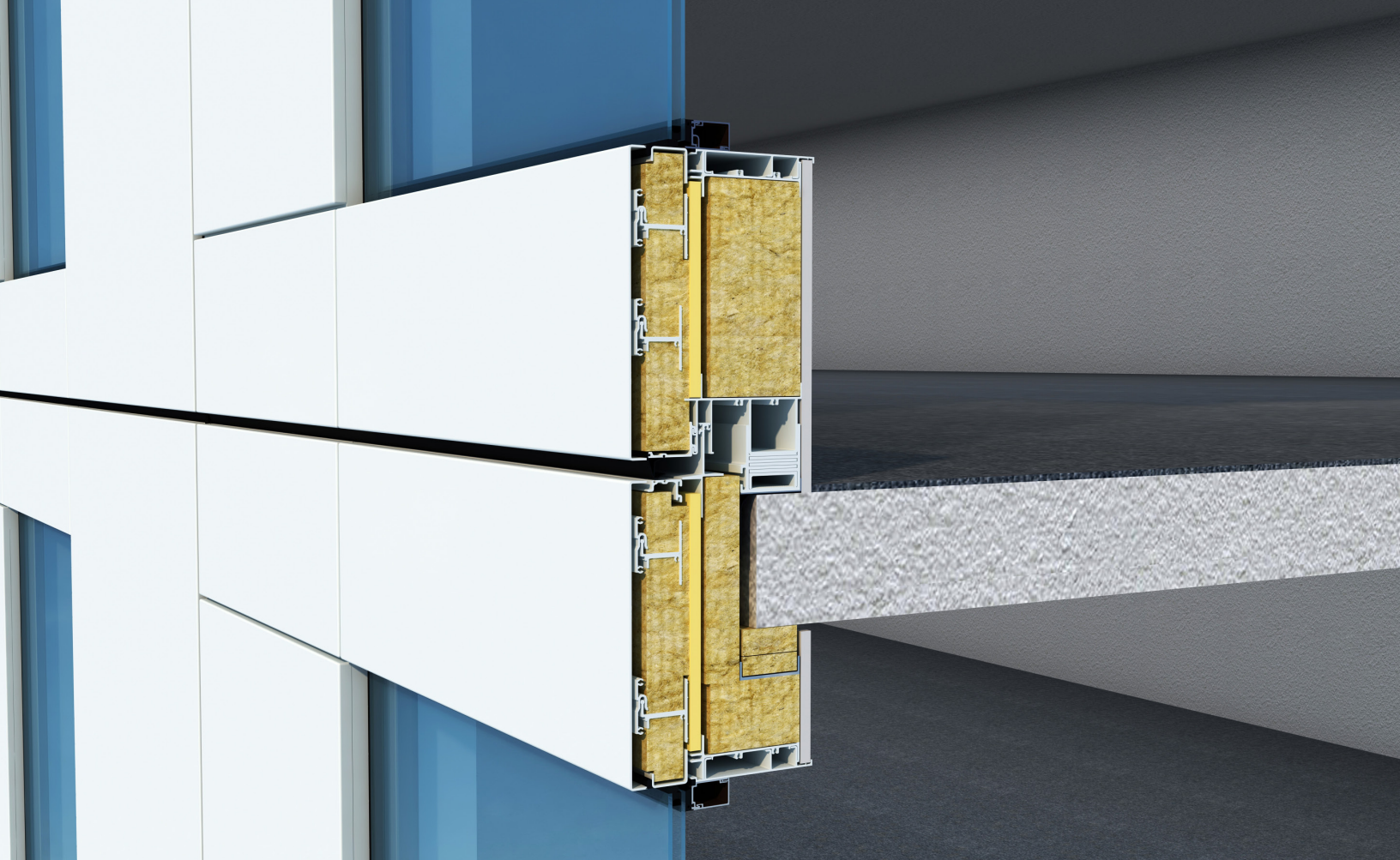
PHENOLIC WOOD



TERRA COTTA



*ADDITIONAL FINISHES AVAILABLE



Technology

Utilizes Benson®
Curtain Wall
Stack Joint
Technology

PERFORMANCE TESTED FOR SUPERIOR SPECIFICATIONS

ONEWALL® meets the following:

- Air Infiltration: ASTM E 283-12
- Static Water @ 15 PSF: ASTM E 331-16
- Dynamic Water @ 15 PSF: AAMA 501.1-17
- Structural Design Load +/- 40 PSF: ASTM E 330-14
- Vertical Live Load +/- 5/8": AAMA 501.7-17
- Interstory Drift Elastic +/- 9/16": AAMA 501.4-18
- Interstory Drift Inelastic +/- 2-1/2": AAMA 501.4-18
- Structural Over Load +/- 72 PSF: ASTM E 330-14
- Thermal R 20 or greater, U value of .05 or less with 5-1/2" insulation
- Fire separation between panels meets ASTM E2307 and State Fire Code
- Interior finishes attach directly to interior surface
- All projects to be fully structurally engineered

[MII.COM/ONEWALL](https://mii.com/ONEWALL)

503-969-7541 | ryan.raschke@mii.com

Scan to watch the video

